



Product Data Sheet:

GRP-Cable channel with glass-matting reinforcement

The GRP- cable duct system produced with polyester resin combines an optimum price/performance ratio.

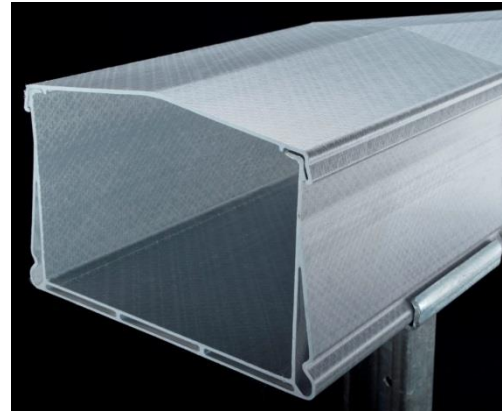
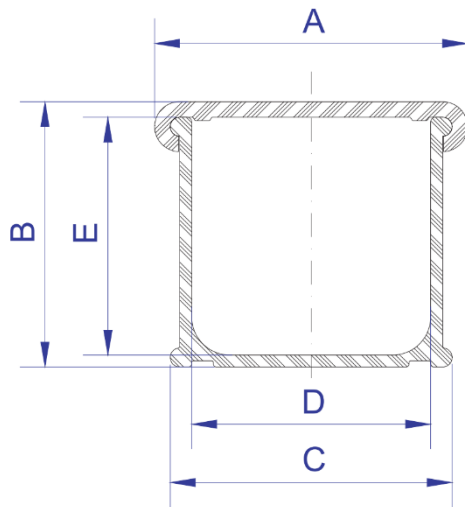
The GRP- cable duct system produced with acryl resin is seen most often in closed rooms, tunnels and airports.

Material composition: Polyester-/Acryl resin with unidirectional glass fibre roving (longitudinal rigidity) and glass-matting reinforcement (transverse rigidity)

Production: Pultrusion

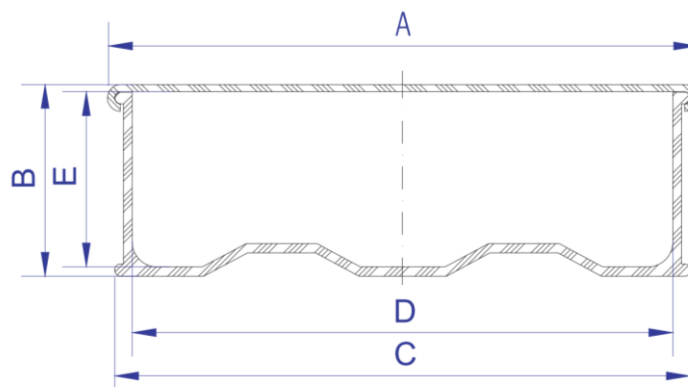
Technical data:

	Test Method	Unit	Polyester	Acryl resin
Specific weight	ASTM D792	g/cm ³	1.8	2
Glass content by weight	ISO 1172	%	60	50
Tensile strength	ASTM D638	MPa	400	300
Tensile modulus	ASTM D638	GPa	26	20
Flexural strength	ASTM D790	MPa	400	300
Flexural modulus	Full Bending	GPa	25	20
Compressive strength	ASTM D695	MPa	220	150
Compressive modulus	ASTM D695	GPa	20	15
Impact strength(Charpy)	ASTM D256	kJ/m ²	180	150
Water absorption	ISO 62	%	0,4	0,4
Dielectric strength	ASTM D149	kV/mm	5	10
Surface resistivity	ASTM D257	Ω	10 ¹²	10 ¹³
Coefficient of Thermal Expansion	ASTM D696	K ⁻¹	11 x 10 ⁻⁶	9 x 10 ⁻⁶
Thermal conductivity	ASTM C177	W/mK	0,35	0,3
Toxicity index	CEI 2037 part 2		<2	<1
M classification	NF P 92-501	Class	M3	M1 (0%)
F classification	NF F 16-101	Class	F2	F0
I classification	NF F 16-101	Class	I4	I0
Surface flame propagation	BS 476 part 7	Class	3	1
Flammability index (glow wire)	IEC 695-2-1	°C	/	960
Flammability test (vertical sample)	UL 94	Grade	V0	V0
Halogen content	IEC 61249-2-21			No



Type	A	B	C	D	E
50 x 50	64.5	55	59	50	50
80 x 80	95.4	85	90	80	80
100 x 50	115.4	55	110	100	50
120 x 120	136.4	125	131	120	120
140 x 70	156.4	75	151	140	70
140 x 100	156.4	105	151	140	100
140 x 140	156.4	145	151	140	140
*175 x 70	191.4	75	186	175	70
*175 x 120	191.4	125	186	175	120
*175 x 175	191.4	180	186	175	175
200 x 80	216.5	85	211	200	80
300 x 80	316.4	82	311	300	76

Dimension in mm, * only polyester formulation



Type	A	B	C	D	E
400 x 80	417.4	86	411	400	80
500 x 80	517.4	86	511	500	80
600 x 80	617.4	86	611	600	80

Dimension in mm